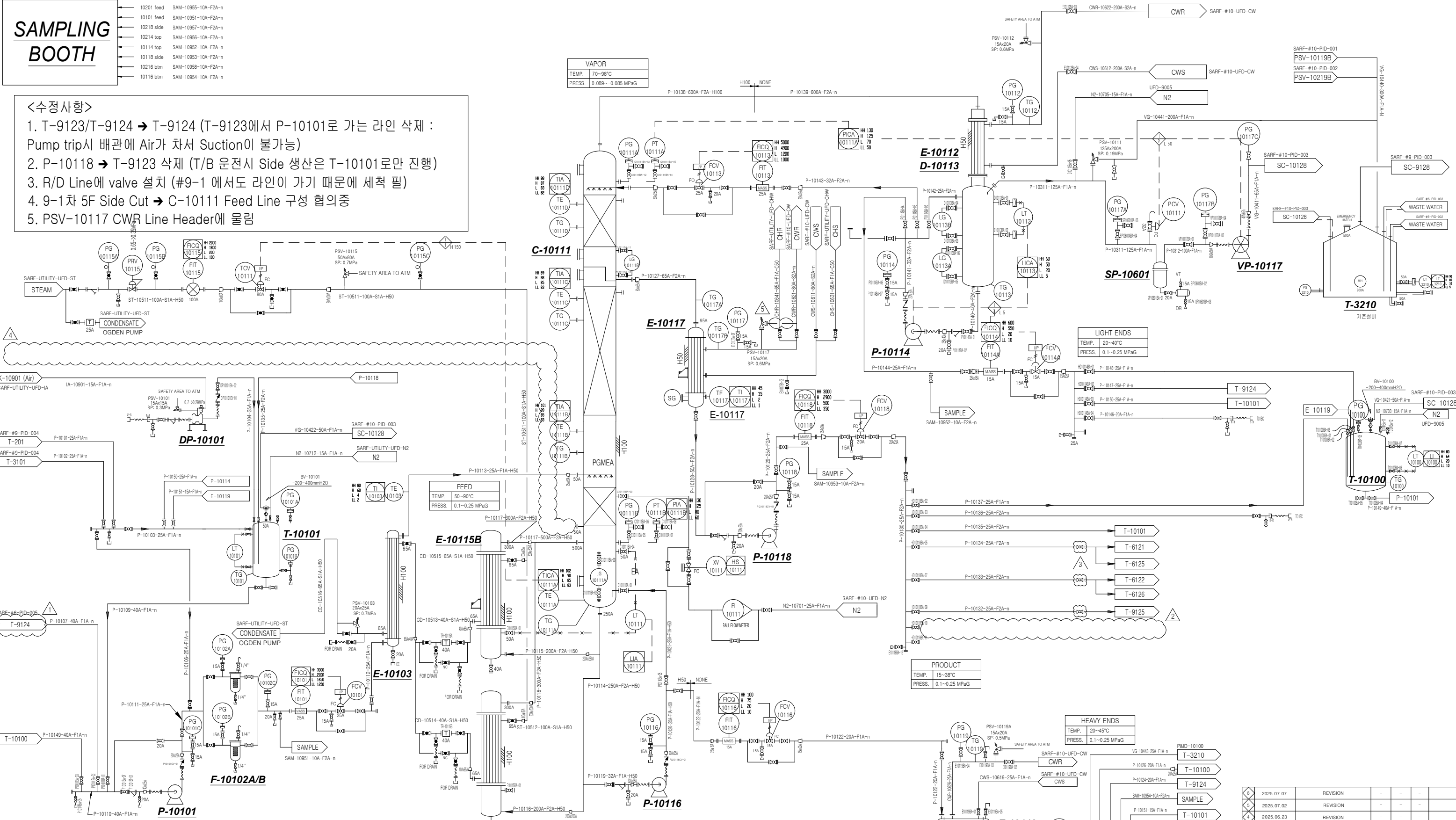




SAMPLING BOOTH	
10201 feed	SAM-10955-10A-F2A-n
10101 feed	SAM-10951-10A-F2A-n
10218 slide	SAM-10957-10A-F2A-n
10214 top	SAM-10956-10A-F2A-n
10114 top	SAM-10952-10A-F2A-n
10118 slide	SAM-10953-10A-F2A-n
10216 btm	SAM-10958-10A-F2A-n
10116 btm	SAM-10954-10A-F2A-n

1. T-9123/T-9124 → T-9124 (T-9123에서 P-10101로 가는 라인 삭제 : Pump trip시 배관에 Air가 차서 Suction이 불가능)
2. P-10118 → T-9123 삭제 (T/B 운전시 Side 생산은 T-10101로만 진행)
3. R/D Line에 valve 설치 (#9-1 에서도 라인이 가기 때문에 세척 필)
4. 9-1차 5F Side Cut → C-10111 Feed Line 구성 협의중
5. PSV-10117 CWR Line Header에 물림



T-10101	T-10100	T-3210 (기존설비)	F-10102A/B	SP-10601	PREHEATER	COLUMN	REFLUX DRUM	E-10119	E-10117
FEED BUFFER TANK	RECYCLE TANK	WASTE WATER TANK	FILTER HOUSING	SEPERATER					
SIZE : Ø2,500 x 3,600H VOLUME : 20.6M <sup>3</sup> DP /OP : F.W /ATM DT/ OT : 80°C / AMB MATERIAL : STS304	SIZE : Ø1,100 x 1,259H VOLUME : 1.46M <sup>3</sup> DP /OP : F.W /ATM DT/ OT : 80°C / AMB MATERIAL : STS304	SIZE : Ø3,800 x 4,000H VOLUME : 45.36M <sup>3</sup> DP/OP : F.W / ATM DT/OT : 80 °C / 40 °C MATERIAL : STS304	SIZE : Ø89.1 x 366H VOLUME : 0.002M <sup>3</sup> DP /OP : 0.99MPa / 0.5MPa DT/ OT : 40°C / AMB MATERIAL : STS304	SIZE : Ø 396.4 x 500H VOLUME : 0.098M <sup>3</sup> DP /OP : 0.18 MPa / 0.009 MPa DT/ OT : 200°C / 98°C MATERIAL : STS304	SIZE : Ø259.4 x 1,482H (0.1m3) DP(S/T) : 1.0 MPa / 0.5 MPa OP(S/T) : 0.3 MPa / 0.3 MPa DT(S/T) : 180 °C / 150 °C OT(S/T) : 140 °C / 60 °C MATERIAL(S/T) : STS304 / STS316L INSULATION : H100	SIZE : Ø1,300 x 36,871H (49.5m3) DP : 0.19 MPa / OP : 0.009 MPa DT : 200 °C / OT : 98 °C MATERIAL : STS316L INSULATION : H100	SIZE : Ø1,000 x 4,180H (3.4m3) DP : 0.3 MPa / OP : 0.01 MPa DT : 180 °C / OT : 45 °C MATERIAL : STS316L INSULATION : NONE	SIZE : Ø259.4 x 982H (0.076m3) DP(S/T) : 0.5 MPa / 0.5 MPa OP(S/T) : 0.3 MPa / 0.3 MPa DT(S/T) : 180 °C / 150 °C OT(S/T) : 35 °C / 109 °C MATERIAL(S/T) : STS304 / STS304 INSULATION : H50	SIZE : Ø800 x 2,982H (1.87m3) DP(S/T) : 0.7 MPa / 0.3 MPa OP(S/T) : 0.3 MPa / 0.1 MPa DT(S/T) : 180 °C / 180 °C OT(S/T) : 15 °C / 86 °C MATERIAL(S/T) : STS304 / STS316L INSULATION : H100
DP-10101	P-10101	P-10114	P-10116	P-10118	VP-10117	E-10112	E-10115 A/B	E-10119	E-10117
DIAPHRAGM PUMP	FEED PUMP	TOP PUMP	BOTTOM PUMP	SIDE PUMP	VACUUM PUMP	TOP CONDENSER	REBOILER	BOTTOM COOLER	SIDE CONDENSER
CAPA : 60L/min SIZE : 25A/25A MATERIAL : STS316/PTFE PRESSURE : 0.3MPa RPM : 3,600	CAPA : 60L/min SIZE : 25A/20A MATERIAL : STS316 PRESSURE : 0.25MPa RPM : 3,520	CAPA : 90L/min SIZE : 25A/20A MATERIAL : STS316 PRESSURE : 0.35MPa RPM : 3,530	CAPA : 15L/min SIZE : 25A/20A MATERIAL : STS316 PRESSURE : 0.25MPa RPM : 3,520	CAPA : 48L/min SIZE : 25A/20A MATERIAL : STS316 PRESSURE : 0.25MPa RPM : 3,520	CAPA : 345m <sup>3</sup> /h SIZE : 50A/40A MATERIAL : FCD400+PTFE Coated PRESSURE : 0.05Torr RPM : 3,550	SIZE : Ø1,000 x 2,982H (2.4m3) DP(S/T) : 0.7 MPa / 0.3 MPa OP(S/T) : 0.3 MPa / 0.01 MPa DT(S/T) : 120 °C / 180 °C OT(S/T) : 25 °C / 85 °C MATERIAL(S/T) : STS304 / STS316L	SIZE : Ø645 x 2,482H (1.2m3) DP(S/T) : 1.0 MPa / 0.3 MPa OP(S/T) : 0.45MPa / 0.01 MPa DT(S/T) : 220 °C / 220 °C OT(S/T) : 147 °C / 98 °C MATERIAL(S/T) : STS304 / STS316L	SIZE : Ø259.4 x 982H (0.076m3) DP(S/T) : 0.5 MPa / 0.5 MPa OP(S/T) : 0.3 MPa / 0.3 MPa DT(S/T) : 180 °C / 150 °C OT(S/T) : 35 °C / 109 °C MATERIAL(S/T) : STS304 / STS304 INSULATION : H50	SIZE : Ø800 x 2,982H (1.87m3) DP(S/T) : 0.7 MPa / 0.3 MPa OP(S/T) : 0.3 MPa / 0.1 MPa DT(S/T) : 180 °C / 180 °C OT(S/T) : 15 °C / 86 °C MATERIAL(S/T) : STS304 / STS316L INSULATION : H100

4	2025.07.07	REVISION	-	-	-	
5	2025.07.02	REVISION	-	-	-	
6	2025.06.23	REVISION	-	-	-	
3	2025.06.20	REVISION	-	-	-	
6	2025.06.17	REVISION	-	-	-	
1	2024.04.04	AS BUILT	K.S.Y	J.O.Y	H.J.J	
REV.	DATE	DESCRIPTION	DRWN	CHKD	APPD	REMARK

PROJECT NAME		10th PLANT 증설공사	
OWNER :		 SHINAM REFINED FUEL CO.,LTD.	
CONTRACTOR :		 주식회사 한울	
TITLE : PIPING & INSTRUMENT DIAGRAM PGMEA PROCESS			
JOB NO.	-	DWG NO.	10th PLANT 증설공사 PGMEA 공정 P&ID 1001